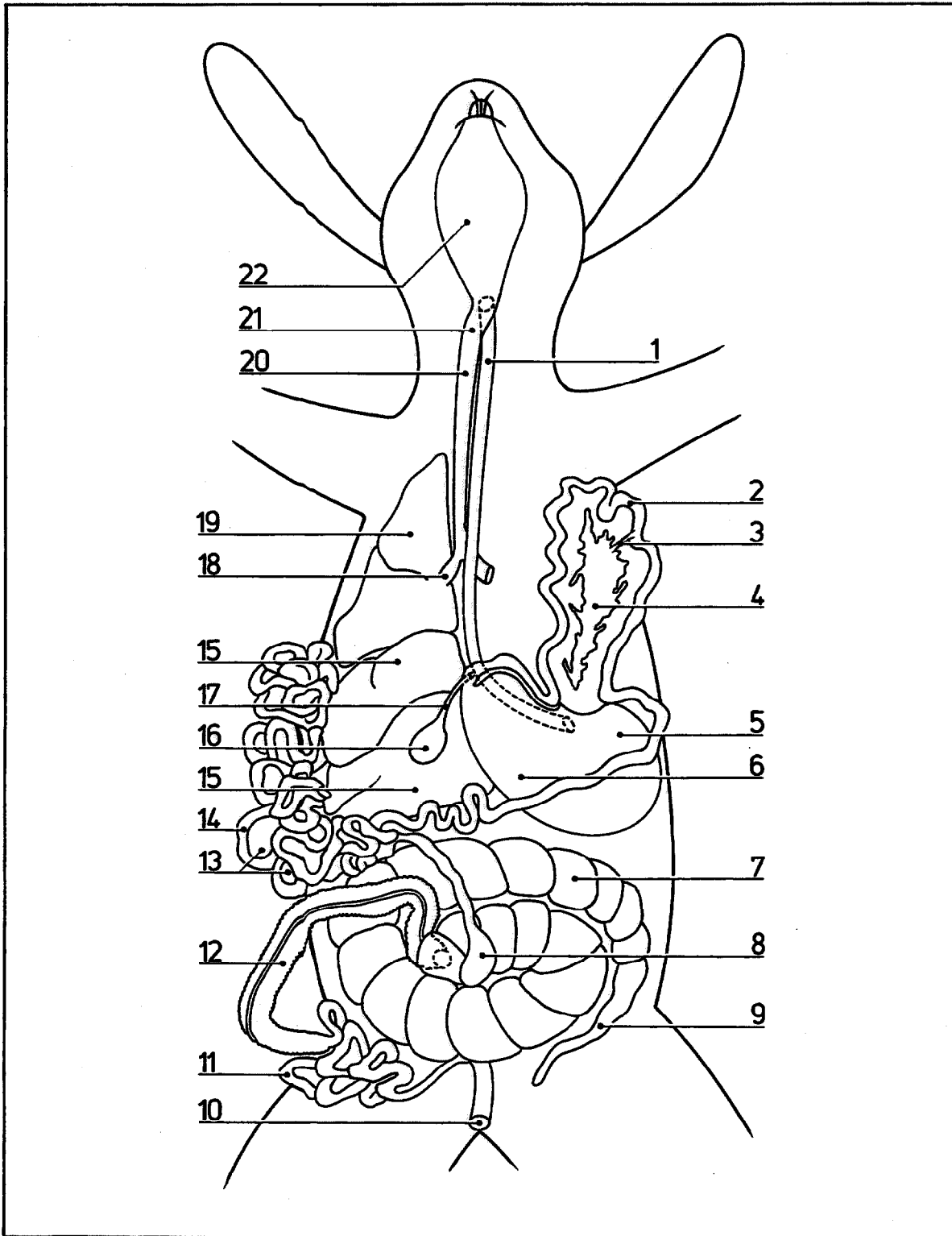


Rabbit: digestive and respiratory systems

8.53



© DIAGRAM

- | | | |
|---------------------------|------------------------|------------------|
| Left lung removed | 9 Vermiform appendix | 18 Bronchus |
| 1 Esophagus | 10 Anus | 19 Right lung |
| 2 Duodenum | 11 Rectum | 20 Trachea |
| 3 Pancreatic duct | 12 Colon | 21 Larynx |
| 4 Pancreas | 13 Mesentery | 22 Buccal cavity |
| 5 Pyloric part of stomach | 14 Ileum | |
| 6 Cardiac part of stomach | 15 Liver (pulled back) | |
| 7 Cecum | 16 Gall bladder | |
| 8 Sacculus rotundus | 17 Bile duct | |